

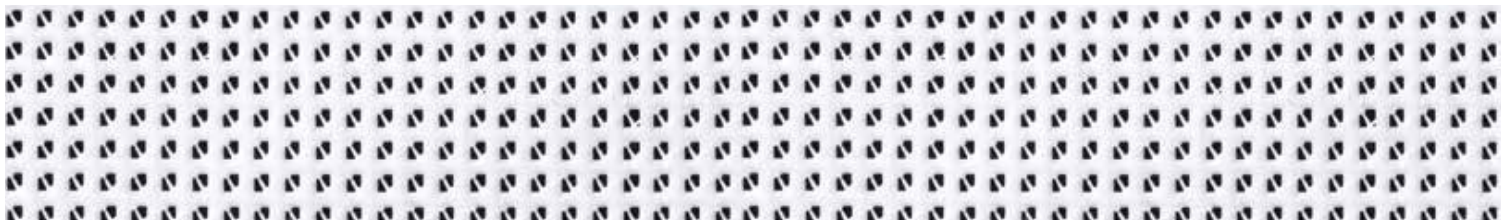
# PRINTED BANNERS

## PRODUCT SPECIFICATIONS



Whether you are on a budget or looking to create a lasting impression to advertise your business on a large scale, we've got the right solution for your intended purpose. Printed Banner Mesh is a great way to create brand awareness and exposure to passing traffic while meeting dust control and council regulations.

### BANNER MESH



#### Details:

- Blocks 70% of light
- Good print quality and colour vibrancy
- Good UV Longevity

#### Strength & Weakness

- Great image quality and endurance
- Long outdoor use
- Heavy and difficult to transport
- Most expensive option

#### Finishing:

Standard option comes with reinforced stainless steel eyelets top and bottom.

#### Size:

Standard roll sizes are 1.6 x 50m & 1.8 x 50m. Can be provided in any custom size required.

#### Mesh Weave:

- 12x12 - High print quality
- 9 x 9 - For breezy locations
- 9 x 9 Special - For high wind locations and for people on a budget

#### Print:

Digitally printed, no limits with the amount of colours used on logo or images.



FOR FURTHER INFORMATION CONTACT US



Shade Australia Pty Ltd

A: 91 Stanley Road Ingleburn NSW 2565

E: [info@shadeaustralia.com.au](mailto:info@shadeaustralia.com.au)

P: 1800 155 233 or 02 9605 5560

W: [shadeaustralia.com.au](http://shadeaustralia.com.au)

[WWW.SHADEAUSTRALIA.COM.AU](http://WWW.SHADEAUSTRALIA.COM.AU)

# PRINTED BANNERS

## PRODUCT SPECIFICATIONS



Selecting the best option for your project is an important part of the process. We have 4 types of material to choose from, each has slightly different print and durability characteristics. Feel free to give us a call on 1800 155 233 if you need help choosing the correct printed banner for your job.

	Rolls Sizes	Print Area	Fabric	Durability	Print Quality
12X12	50 x 1.6 / 1.8m	48 x 1.6 / 1.8m	80%	4 yrs	Very High
9X9	50 x 1.6 / 1.8m	48 x 1.6 / 1.8m	65%	2 yrs	Very High
9X9 SPECIAL	50 x 1.6 / 1.8m	48 x 1.6 / 1.8m	50%	2 yrs	High

### 12X12



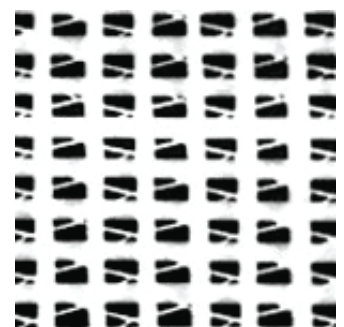
Best For: Privacy, Print Quality & Durability

### 9X9



Best For: Wind Exposure

### 9X9 SPECIAL



Best For: High Wind Exposure

## STEP 3 - SUPPLYING YOUR ARTWORK

### What can you print?

In short, anything you would like. We do not have any limits on the amount of colours or images used as long as they are provided in the correct format.

### Supplying your artwork

You can either supply your artwork completed on the relevant template or send us through your concept and any logos, taglines or fonts you wish to include.

Please submit your artwork via email to [info@shadeaustralia.com.au](mailto:info@shadeaustralia.com.au)

**Please note: All artwork needs to be provided in the correct format. We accept PDF, EPS, AI or 300dpi images.**

PDF: Press quality, high resolution. All fonts outlined.

AI & EPS: Fonts outlined and images embedded.

JPEG: 300dpi and maximum quality.

### Proof & Print

Once artwork has been received we will always send it through to get your approval. Please make sure you double check all artwork as once approval has been given printing will commence and changes will not be able to be made. **Shade Australia will not take any responsibility for incorrect spelling or any mistakes if approval has been given.**