



SORRENTO

PRODUCT SPECIFICATIONS

AN **EASY TO USE**, SMALL SIZED TELESCOPIC UMBRELLA THAT WILL BE A WELCOMED ADDITION TO ANY OUTDOOR SETTING.

FEATURES

- Available in 2.5m Square
- Telescopic design
- Finger light Easi Track opening
- Olefin canopy
- 96% UV block
- Closes over most tables

FOR FURTHER INFORMATION CONTACT US



Shade Australia Pty Ltd

A: 91 Stanley Road Ingleburn NSW 2565

E: info@shadeaustralia.com.au

P: 1800 155 233 or 02 9605 5560

W: shadeaustralia.com.au



SORRENTO

PRODUCT SPECIFICATIONS



The Sorrento is new to the Shelta range, it is a smaller sized option suited to use in tables. This umbrella is a telescopic umbrella meaning that the top raises on closing to clear tables and lowers on opening to keep the open height from being excessive. When closed, the Sorrento has a mast height of 279cm with the tip of the longest rib to the ground when closed is 98cm (Depending on which base is used).

FABRIC

Hard wearing Olefin canvas with It has a UPF of 20-30 (95-97% UV Protection).

WARRANTY

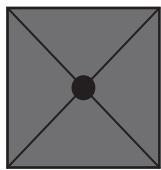
1 Year fade resistance warranty on the fabric and 1 Year manufactures warranty on the frame

FRAME

One piece graphite powdercoated colour pole with an Easi Track opening and locking control on the shaft.

INSTALLATION OPTIONS

This umbrella requires a base that will fit a 48 mm pole. We recommend the Sunranger Classic Steel. No set up required.



SQUARE
2.5 m

Area (m²)

6.25 m²

Mast

48 mm

Frame

Graphite Powdercoated

Opening

Easi Track

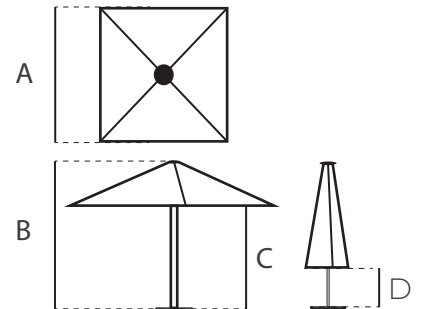
Dimensions (mm)

A 2500

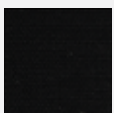
B 2400

C 1945

890



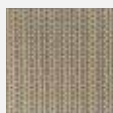
CANOPY COLOURS



Black



Sandstone



Champagne



Taupe



Charcoal