



# HARBORD

## PRODUCT SPECIFICATIONS

A FULLY HEIGHT ADJUSTABLE  
UMBRELLA MAKING IT  
CONVENIENT, COMPACT AND  
ADAPTABLE ALL AT AN  
AFFORDABLE PRICE.

### FEATURES

- Tilt head feature
- Push and lock opening system
- Aluminium frame
- Hardwearing Polyester canopy
- Up to 95% UV Protection
- Fully height adjustable

FOR FURTHER INFORMATION CONTACT US



Shade Australia Pty Ltd

A: 91 Stanley Road Ingleburn NSW 2565

E: [info@shadeaustralia.com.au](mailto:info@shadeaustralia.com.au)

P: 1800 155 233 or 02 9605 5560

W: [shadeaustralia.com.au](http://shadeaustralia.com.au)



# HARBORD

## PRODUCT SPECIFICATIONS



The Harbord is a practical, feature packed umbrella for domestic use. Including a push and lock opening system and is fully height adjustable making it a convenient, compact and adaptable small aluminum umbrella. Perfect for a small seating area of 2-4 seats.

### FABRIC

Lightweight Polyester which offers up to 95% UV Protection.

### FRAME

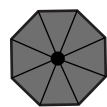
Two piece Aluminium frame with a collar tilt feature providing effective protection from the sun at all times of the day.

### WARRANTY

1 year manufacturers warranty on the frame.

### INSTALLATION OPTIONS

This umbrella requires a base that will fit a 38 mm pole. We recommend the Classic Steel 15kg base.



HEXAGONAL  
2.5 m

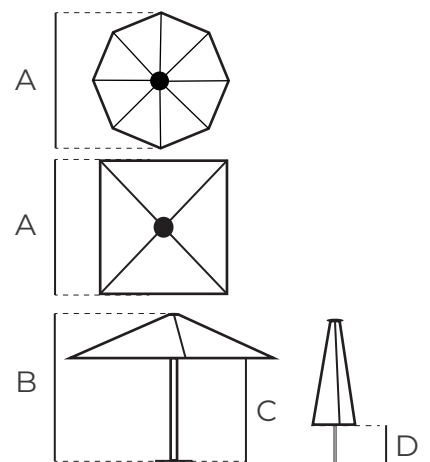


SQUARE  
2.2 m

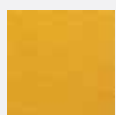
Area (m <sup>2</sup> )	4.1 m <sup>2</sup>	4.8 m <sup>2</sup>
Mast 2pc	Top: 35mm / Bottom: 38 mm	
Frame	Charcoal Powdercoated	
Opening	Push and Lock	

Dimensions (mm)	A	2500	2200
	B	2500*	2500*
	C	2100*	2100*
	D	1200	840

\*Variable - Height adjustable



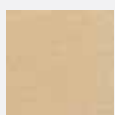
### CANOPY COLOURS



Yellow



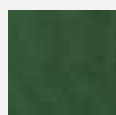
French Grey



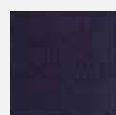
Natural



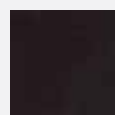
Turquoise



Forest



Navy



Black