



# PALERMO

## PRODUCT SPECIFICATIONS

A BEAUTIFUL COLLECTION OF UMBRELLAS, MANUFACTURED IN HIGH QUALITY KEMPAS, HARDWOOD PLANTATION GROWN IN MALAYSIA

### FEATURES

- Available in 3.3m Octagonal
- Rope & Pulley opening
- Hardwood Plantation grown timber
- Heavy duty Polyester canvas
- Two piece pole
- Stylish Silver trim

FOR FURTHER INFORMATION CONTACT US



Shade Australia Pty Ltd

A: 91 Stanley Ingleburn NSW 2565

E: [info@shadeaustralia.com.au](mailto:info@shadeaustralia.com.au)

P: 1800 155 233 or 02 9605 5560

W: [shadeaustralia.com.au](http://shadeaustralia.com.au)



# PALERMO

## PRODUCT SPECIFICATIONS



The Palermo is a medium to large sized timber market umbrella with a frame made from fine grain hardwood. The timber is rich mid-brown and is treated for longevity. Its large 3.3m Octagonal size is a bargain at this budget price!

### FABRIC

Manufactured from heavy duty Polyester Canvas which offers a 93% UV block.

### FRAME

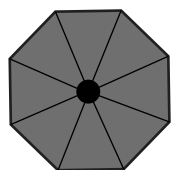
A one piece 48mm hardwood timber pole. Arms are timber with silver trim to give a smart finishing touch.

### WARRANTY

This product has a 1 year manufacturers warranty on the frame.

### INSTALLATION OPTIONS

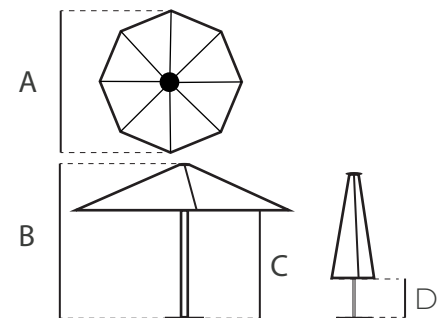
This umbrella requires a base that will fit a 48 mm pole. We recommend the Classic Steel Base Plate. No set up required.



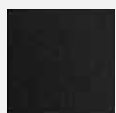
OCTAGONAL  
3.3 m

|                        |                     |
|------------------------|---------------------|
| Area (m <sup>2</sup> ) | 8.55 m <sup>2</sup> |
| Mast                   | 48 mm               |
| Frame                  | Hardwood Timber     |
| Opening                | Rope & Pulley       |

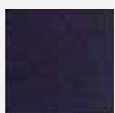
|            |   |      |
|------------|---|------|
| Dimensions | A | 3300 |
|            | B | 2730 |
|            | C | 2070 |
|            | D | 950  |



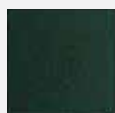
### CANOPY COLOURS



Black



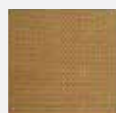
Navy



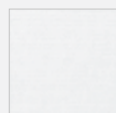
Forest



Natural



Camel



White



French Grey